

NWHIS

Pure Water & Mildly Corrosive Solution Applications

Specifications and Ordering Information

kW	Volts	Ckt & Phase	Dimensions (In.)			Model	Stock	PCN	Wt. (Lbs.)
			A	B	C				
Series 03 — 3 inch, 150 lb 304 passivated stainless steel vessel, 3 INCOLOY® elements (45 W/In²) with side mounted thermostat (60 to 250°F) — 1" NPT pipe inlet and outlet									
6	240	1-3	32-15/16	22-1/2	16-1/2	NWHIS-03-006P-E1	NS	012010	70
6	480	1-3	32-15/16	22-1/2	16-1/2	NWHIS-03-006P-E1	NS	012028	70
12	240	1-3	42-15/16	32-1/2	26-1/2	NWHIS-03-012P-E1	NS	012036	80
12	480	1-3	42-15/16	32-1/2	26-1/2	NWHIS-03-012P-E1	NS	012044	80
18	240	1-3	55-7/16	45	39	NWHIS-03-018P-E1	NS	012052	98
18	480	1-3	55-7/16	45	39	NWHIS-03-018P-E1	NS	012060	98
Series 06 — 5 inch, 150 lb 304 passivated stainless steel vessel, 6 INCOLOY® elements (45 W/In²) with side mounted thermostat (60 to 250°F) — 2" NPT pipe inlet and outlet									
24	240	2-3	41-3/4	30	11-3/8	NWHIS-06-024P-E1	NS	012079	140
24	480	1-3	41-3/4	30	11-3/8	NWHIS-06-024P-E1	NS	012087	140
30	240	2-3	48-3/4	37	14-1/8	NWHIS-06-030P-E1	NS	012095	155
30	480	1-3	48-3/4	37	14-1/8	NWHIS-06-030P-E1	NS	012108	155
40	240	2-3	60-1/4	48-1/2	20-5/8	NWHIS-06-040P-E1	NS	012116	176
40	480	2-3	60-1/4	48-1/2	20-5/8	NWHIS-06-040P-E1	NS	012124	176
50	480	2-3	73-5/8	61-7/8	27-5/16	NWHIS-06-050P-E1	NS	012132	210
Series 18 — 8 inch, 150 lb 304 passivated stainless steel vessel, 18 INCOLOY® elements (45 W/In²) — 2-1/2" NPT pipe inlet and outlet									
50	240	3-3	45-1/4	24-11/16	21-3/16	NWHIS-18-050P-E1	NS	021311	396
50	480	3-3	45-1/4	24-11/16	21-3/16	NWHIS-18-050P-E1	NS	021320	396
75	240	3-3	53-1/4	32-11/16	29-3/16	NWHIS-18-075P-E1	NS	021338	414
75	480	3-3	53-1/4	32-11/16	29-3/16	NWHIS-18-075P-E1	NS	021346	414
100	240	3-3	60-1/4	39-11/16	36-3/16	NWHIS-18-100P-E1	NS	021354	425
100	480	3-3	60-1/4	39-11/16	36-3/16	NWHIS-18-100P-E1	NS	021362	425
125	240	3-3	67-7/8	47-5/16	43-13/16	NWHIS-18-125P-E1	NS	021370	470
125	480	3-3	67-7/8	47-5/16	43-13/16	NWHIS-18-125P-E1	NS	021389	470
150	240	3-3	77-3/8	56-13/16	53-5/16	NWHIS-18-150P-E1	NS	021397	535
150	480	3-3	77-3/8	56-13/16	53-5/16	NWHIS-18-150P-E1	NS	021400	535
175	240	3-3	86-3/8	65-13/16	62-5/16	NWHIS-18-175P-E1	NS	021418	625
175	480	3-3	86-3/8	65-13/16	62-5/16	NWHIS-18-175P-E1	NS	021426	625
200	240	3-3	104-3/8	83-13/16	79-5/16	NWHIS-18-200P-E1	NS	021434	705
200	480	3-3	104-3/8	83-13/16	79-5/16	NWHIS-18-200P-E1	NS	021442	705

Stock Status: S = stock NS = non-stock
To Order—Specify model, volts, phase, kW, PCN and quantity.

Note — Refer to the Controls section for control panels.

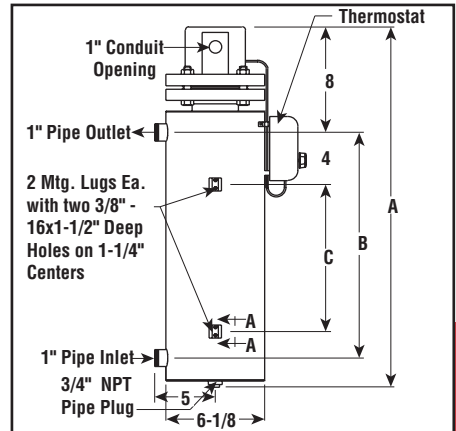
Ordering Information

To Order — Complete the Model Number using the Matrix provided.

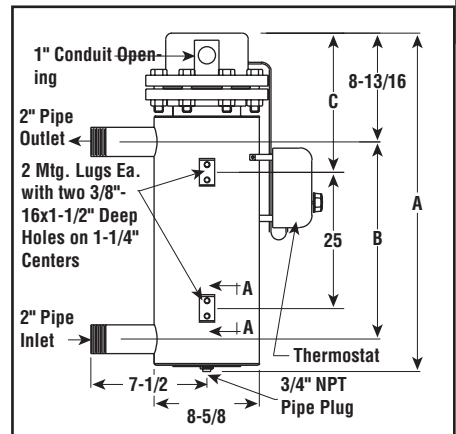
Model	Pure Water and Mildly Corrosive Solution			
NWH IS	Water Circulation Heater INCOLOY® Elements — Stainless Steel Vessel			
	Code	Number of Elements		
	03	Three		
	06	Six		
	18	Eighteen		
	Code	kW		
	006P	6	040P	40
	012P	12	050P	50
	018P	18	075P	75
	024P	24	100P	100
	030P	30	125P	125
	Code	Terminal Enclosure		
	E1	General Purpose		
	E2	Moisture Resistant/Explosion Resistant		
	E4	Moisture Resistant		
NWH	03	006P	E1	Typical Model Number

Dimensions (Inches)

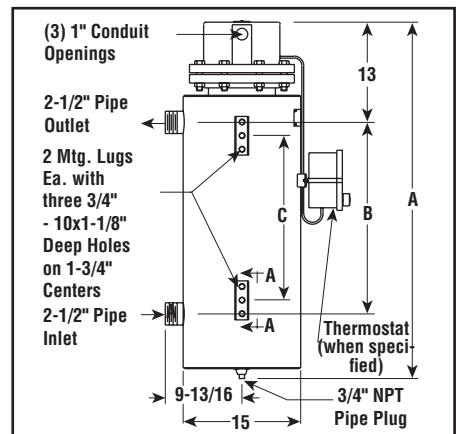
NWHIS-03



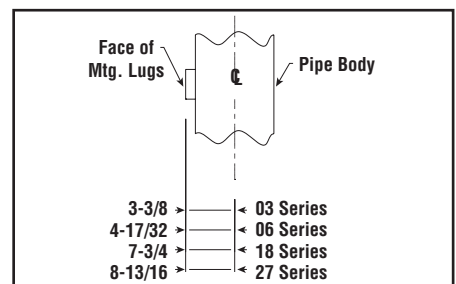
NWHIS-06



NWHIS-18



NWHIS-AA



STEAM, AIR
AND GAS